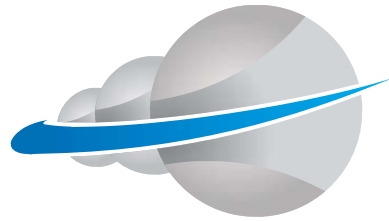


FORTUNE SYSTEMS

WE SYNCHRONIZE BUSINESS BETTER



FORTUNE SYSTEMS



The Complete Financial Integrated ERP

www.fortunesys.com / www.solutiononeerp.com



TM

Solution One

ABOUT FORTUNE SYSTEMS

Fortune Systems is a Leading financial integrated ERP Software Company run by dynamic professionals for Engineering & various Manufacturing Industries with a global approach to deliver services. Our in-depth knowledge and understanding of the Business processes guarantees a successful, unmatched and perfect implementation.

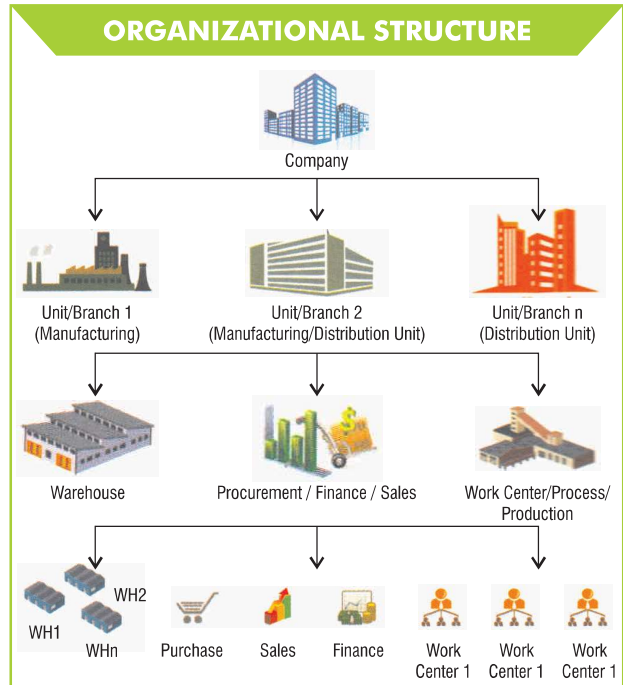
Fortune Systems is a team of creative professionals committed to building innovative paths to transform our clients' visions into successful business realities. At Fortune Systems we focus on optimizing our customers' investments in Information Technology. We help customers envision and shape their future around the key drivers of technology, productivity and cost-effectiveness performance.

WHY SOLUTION ONE

SolutionOne ERP will help you find smarter ways to integrate your resources so that you can facilitate all the aspects of your business processes. Our ERP fascinate traditional and complex various businesses processes and further converges them into one whole unit. Our solutions are one of a kind and specially designed for the fashion in which people work today. It focuses on strategic IT Initiatives. These solutions maximize the availability of the systems or processes and reduce the risks as well. It harvests rapid time which is precious for your new projects while you are giving priorities to your business processes.

Solution One ERP is "Ready Fit" and easy-to-use, configurable and scalable business solutions designed to cater to the needs of small and medium business. With Seamless and complete integration across departments, makes Solution One ERP system an ideal system to fit into your industry. Solution One ERP facilitates increase in business values through process integration, transformation, cost reduction and business process re-engineering at affordable cost.

We invigorate easy-to-use ERP solutions that are competent with your existing systems. It will meet your requirements in present and also in future as the business evolves. Our ERP solutions requisite industries of different nature such as | EPC | Plastics| Electricals| Electronics | Fabrication | Sheet Metal and service.



Solution One

SOLUTION ONE ERP

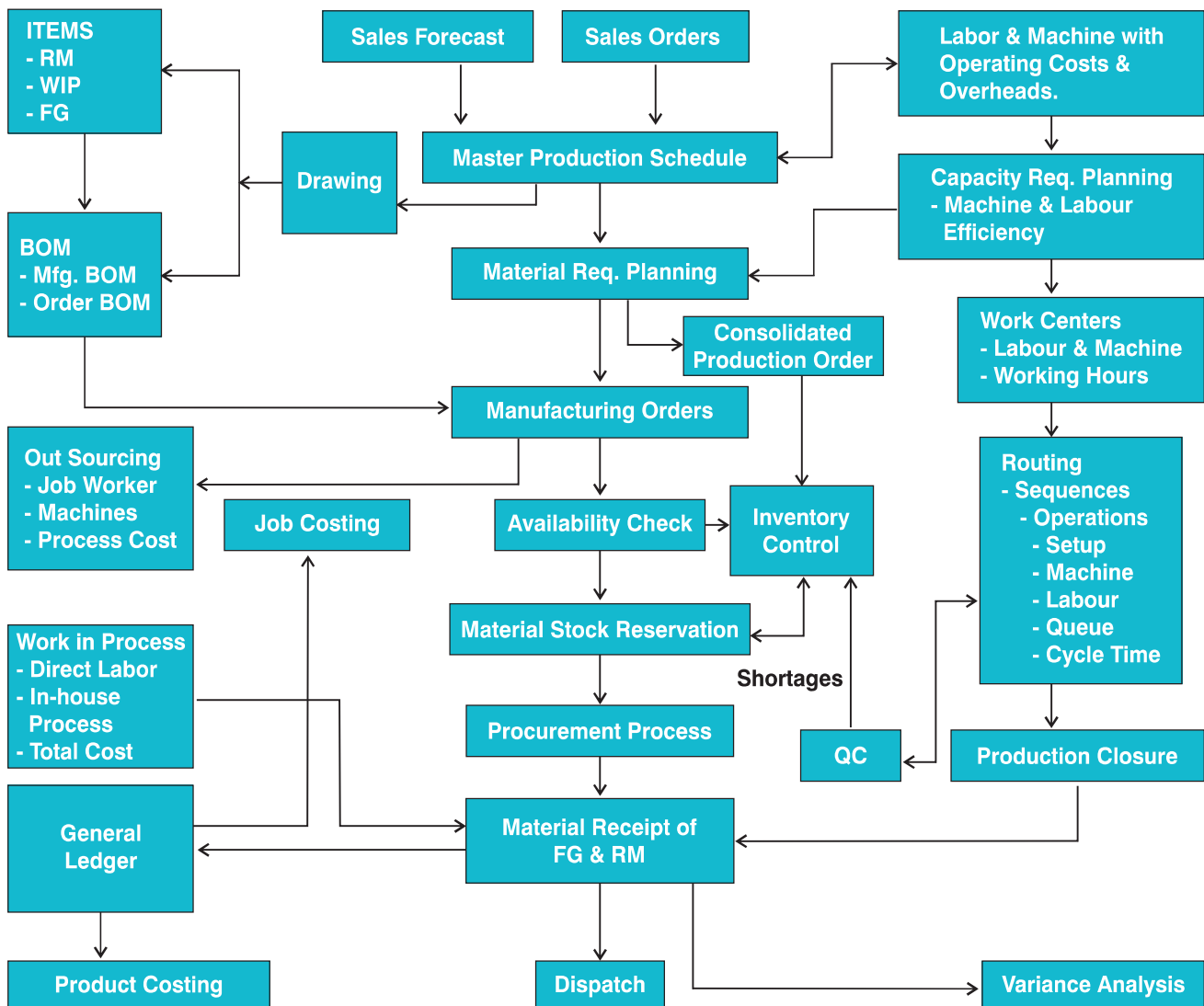
The Complete Financial Integrated ERP



SALIENT FEATURES

- Multi Location concept
- Unit & Warehouse wise user rights management
- Sheet/Plate/Bar/Angle/Channel size wise stock management
- Multi Level BOM entry
- Strong Integration
- Flexible reporting tool
- Minimum Level maintain of items
- Process wise Production Tracking
- Flexible Tax Structure
- Common Masters across all Divisions
- Priority for material reservation based on Group & Warehouse.
- Customer Supplied Materials Tracking
- Vendor Performance Measurement
- Warehouse / Location wise Stock Management.
- Returnable / Non Returnable Challan Management.
- Export Reports in other Format.
- De-Assembly of Manufactured Product
- Controlled Centralized document attachment facility
- Party supplied Material handling (Free Sample/Loan/Jobwork)
- User wise configurable Alerts / Notifications
- User wise configurable Document Authorization / Print Panel
- Material Warranty tracking
- Complete Order to Cash Tracking
- Unit wise Multi Warehouses concept
- Batch wise / Serial No./ Expiry wise stock management
- Multi UOM for each item at Purchase / Sales Activity
- Financial auto posting accounts
- Subcontracting / Jobwork functionality.
- Multiple Unit of Measurements for same Item
- Tolerance limit for Purchase.
- Deactivation of Item / Vendor / Customer / Tax / Warehouse
- QC with Parameters (Purchase / Production)
- Material Reservation / Reversal of reservation Facility.
- Multiple Shipment / Billing against same Customer Order.
- Chart Based Reporting
- Manage Customer/Vendor's Itemcodes.
- Lock of Working Period Facility.
- GST updates (For India)
- Integrated Mobile application.
- Direct Manufacturing Facility
- Asset Management & Plant Maintenance
- Receivable / Payable Ageing Analysis
- Integrated BI (Business Intelligence) Tool
- Customer Order delivery Monitoring analysis
- Complete Procure to Pay tracking
- Complete Production tracking

Manufacturing Flow Chart



CONTROL PANEL

Company Master
Plant / Unit Master
User Master
Material Group / Sub-Group Master
Budget Entry
User Registration
User Rights Management
Multi Currency Creation
Unit of Measurement Creation
System Configuration
Working Period Setting
Document Numbering Sequence

Key Features :

Multiple Plant / Factory location Creation.
Multiple Numbering Sequence generation for each transaction.
Plant wise User definition and controlling mechanism
User defined Working Period and History records
User defined Material group and Sub-group
Financial Integration definition for Auto-Postings Ledger
User Rights Management Matrix

FINANCE & CONTROLLING

Tax & Other Charges
Chart of Account
Tax Group Master
HSN / SAC Code Master
Profit / Cost center
Budget Entry
Supplier Invoice Verification
Bank Transactions
Cash Transactions
Expense Transactions
Journal Voucher Transactions
Bank Reconciliation
Fix Assets Management etc.

Key Features :

Auto Financial entries through Transactions
Auto generation of Profit Center
COGS Analysis
Strong Intergration within the transactions
WIP Analysis
Project Costing etc.

DESIGN & ENGINEERING

Item Master
Standard Bill of Material
SBOM Authorization
Order Bill of Material
Amendment of OBOM

Key Features :

Item Level batch / Serial Number Flag
Item Level Backflush concept
Direct Link with finance ledger
Multi Level Bill of Material entry
Alteration in SBOM
Alteration In OBOM for particular Planning Work Order
OBOM amendment – Detail of stock movement on same time
Multi UOM conversion factor etc.

PLANNING & PRODUCTION INCLUDING MRP

Planner Master
Work Shop Master
Work Center Master
Production General Master
Item Process Card
Link User with Workshop
Production Executive Master
Planning Work Order
Production Work Order
Auto Material Allocation
Auto Material De-allocation
Material OBOM Analysis
Production Process entry
Production Return Entry
Production Closure Entry
Direct Requisition Entry
Sheet / Plate Cutting Process Entry
Gate pass entry
Requisition entry
Labour PO generation
Gatepass return
Jobwork receipt and its Quality check etc.

Key Features :

Item Process card generation for each manufacturing item
Processes handling – In house / Outside / In house subcontracting
Direct sub-contracting work from stock
Accurate planning for BOM items and shortages detail
Analysis of performed activities against shortages
Work center & Work shop fundamental
Can allot overheads cost against production order
Production tracking against Customer order
Production tracking against Forecast order
Process wise Production Tracking
Material Reservation / Reversal of reservation Facility.
Priority for material reservation based on Group & Warehouse.
Manual Material reservation and its analysis
Production tracking for each manufacturing component
Process sequence wise production entry
Quality check against selected production processes
Accurate & as on date WIP analysis
Production return facility
Workshop wise user restriction
Extra material requirement entry facility
Actual costing detail at Prd.order closure
Backflush items consumption analysis
Scrap Generation analysis
Production closure in decimal
Flexibility to eliminate process entry
Special cutting detail for Sheets / Plates Etc.

PROJECT/SALES & DISTRIBUTION

Customer Entry
Sales Item Mater
Customer wise Pricing
Sales Executive Entry
Sales Branch Entry
Sales General Master data
Sales Inquiry
Sales Quotation
Sales Order
Delivery Challan
Sales Invoice
Proforma Invoice
Sales Allocation / De-allocation
Purchase Budget Master etc.

Key Features :

Multiple Customer Shipment / Billing detail
Multiple Sales item codes against each Inventory Item
Multiple UOM conversion factor
Pricing in Multiple currency
Sales Product group creation
Multiple method of order receiving detail
Customer segment & Industry definition
Various method of Sales order entry
Payment Milestone definition
Multiple delivery schedule entry
Single Delivery challan against multiple sales order
Quantity tolerance allowance in delivery challan
Document revision number track
Integration between Inquiry / Quoation & Sales order
Purchase budget detail for boughtout material
Inventory allocation / de-allocation against each Sales order
etc.

Scrap Management

Auto Scrap Generation of RM

- Preventive Action Plan etc....

- Complaint Analysis

- It will prevent manual communication scenario and make users proactive

- Charts are controlled for selected users only

- Various MIS reports

SolutionOne - Stock Chart

Inventory Breakdown:

- Raw Materials: 45.41%
- Finished Goods: 6.1%
- Consumables: 4.51%
- WIP: 2.25%
- Spares: 10.38%
- Other: 23.35%

SolutionOne - Production vs Shipment Quantity

Line chart showing Production (red) and Shipment (blue) from April to March. Production peaks in June and October, while Shipment peaks in June and October.

SolutionOne - Month wise P&V Chart

Bar chart showing Profit & Loss (P&V) by month. Profit is generally positive, peaking in June and October.

SolutionOne - Production vs Stock & Inventory Quantity

Bar chart showing Production (red) and Inventory (blue) from April to March. Production peaks in June and October, while Inventory peaks in June and October.

SolutionOne - Month wise P&V Chart

Bar chart showing Profit & Loss (P&V) by month. Profit is generally positive, peaking in June and October.

Sales Turnover

180.57M

Cost against Sales

116.61M

Sales wise Top Customer List

Customer	Sales Value	Cost Value
SHARAT HEAVY ELECTRICALS	21.5M	6.5M
ASHI INDA LTD, HANUJA	1.5M	0.5M
SHARADH TRANSPORT	1.5M	0.5M
SHIVSHY INTERNATIONAL	0.5M	0.5M

Invoice V/S Costing Analysis

Bar chart showing Invoice (red) and Costing (blue) from March 2017 to March 2018. Invoice is generally higher than Costing.

Product Category wise Sales

Donut chart showing Sales by Product Category:

- Relay: 15.3%
- Traction: 45.07%
- Electrical Panel: 19.81%
- TRAN: 15.78%

Region wise Sales

Donut chart showing Sales by Region:

- NORTH: 27.53%
- SOUTH: 72.47%

City wise Sales

Map of India showing Sales by City. Major cities include New Delhi, Mumbai, Kolkata, Chennai, Bangalore, Hyderabad, Pune, and Ahmedabad.

Sales Progress Chart

Line chart showing Sales Progress from May 2017 to March 2018. Sales are generally increasing, with a significant spike in March 2018.

The Solution One Mobile Application offers instant access to your business activities on just a click and keeps you updated over your Android / IOS phone. The App provides day to day activities detail such as Approvals, Alerts, Business Partners, Stock detail, Sales Price List, Sales Inquiry / Quotation management, Client Visit entry, Complaints, Purchase order detail, Sales Order detail, Management level Dashboard etc., It also allows to contact Clients & Vendors from the list.



APPROVALS

User can approve business activities such as Sales Inquiry / Quotation / Purchase Order / Sales Order / etc.... visible on screen.



ALERTS

User gets notified with relevant business transactions information.



BUSINESS PARTNERS

View or search business partners & can call / Email directly from here.



STOCK INFO

View Group / Sub Group wise stock value as well as desire item stock.



SALES PRICE LIST

Standard /Customer wise price list of all items or selected items.



SALES INQUIRY

User can directly enter Sales Inquiry OR edit it from here.



SALES QUOTATION

User can directly enter Sales Quotation OR edit it from here.



CLIENT VISIT ENTRY

Authorized user can enter his/her client visit and discussed points detail.



SALES COMPLAINTS

User can see assigned Sales Complaints.



DASHBOARD

Management dashboard shows business progress data from various aspects.



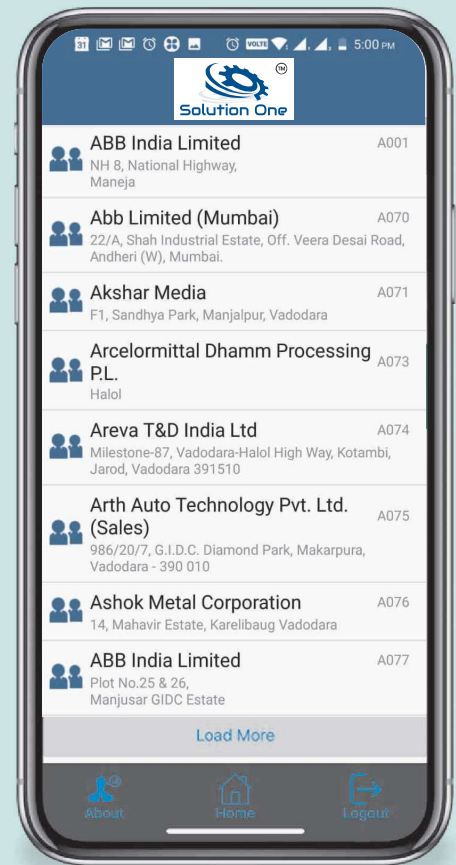
PURCHASE ORDER / SALES ORDER

View any Purchase / Sales order and get detail of it.



EXPENSE ENTRY

User can directly enter expense detail like Vehicle expense / Travel expense / other expense etc...



Download
Google app store



Download
iOS app store



Solution One

**The Complete
Financial Integrated
ERP Software**



**Solution One ERP
Mobile App.**



**Customer/Vendor
Portal**



**TALLY
Integration**



**Microsoft
Power BI
Integration**

Why to Choose "Solution One" ERP ?

- ▶ Founded by SAP Professionals.
- ▶ 15+ Years of Core Engineering Domain Experience.
- ▶ In-depth Engineering Process Knowledge.
- ▶ Well Tested & Proven Product.
- ▶ 2000+ Users.
- ▶ Successful End-to-End Implementation Track Record.
- ▶ Complete Professional Approach.
- ▶ Dedicated Support Team (Onsite / Offsite).
- ▶ Dedicated Implementation Team.
- ▶ User Friendly with Complete Integrated Business Processes across all Departments.



Scalability

Lower Cost of Operations

Better Supply Chain

Reduced Complexity

Business Analytics